

Black Swamp Quilters Block of the Month 2010

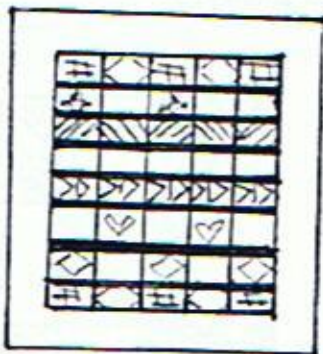
This year the 'block' of the month will be a 'row' quilt. Each month you will receive directions to make a 6" finished block. You will need to make from 3 to 8 of these depending on the month. Some months are combined to make a row. The rows can be set together with sashing to make a complete quilt.

At the September workday, there will be a demo on the "piece and quilt" method of construction, so your quilt can be entirely finished by the November meeting!!! If you need a Christmas gift—it will be ready to go!

Instructions will include directions to make a quilt in several different sizes, from baby to twin. This quilt is designed to use scrap fabric. If you want borders and sashing to match, you will need about 1½-2 yards of coordinating fabric, depending on the size of quilt you are planning.

Quilt Sizes:

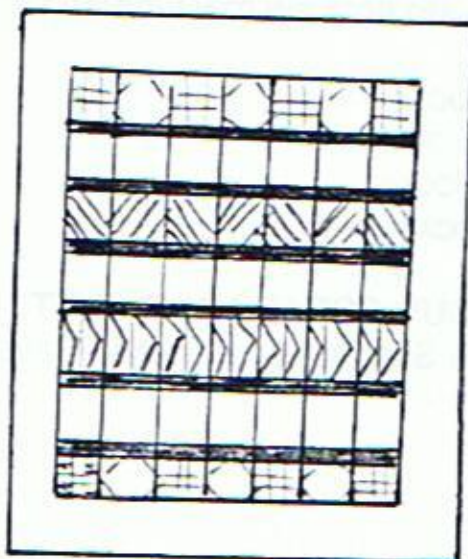
Baby quilt with borders—42" x 54"



Baby quilt without borders—42" x 49"



Youth, Sofa quilt with borders—54" x 62"



Twin quilt with borders—65" x 77"

